

Welcome to the Barnes Wildlife Sanctuary & Wheelwright Park



The Barnes Wildlife Sanctuary is owned by the Town of Cohasset, and is protected in perpetuity by a Conservation Restriction held by the Cohasset Conservation Trust.

The Sanctuary abuts Wheelwright Park and the Cohasset Boy Scout Retreat, as well as the Cornelia & Richardson White Woods, a Trustees of the Reservations land, and the privately-owned Holly Hill Farm.

These 232-acres comprise a rare deep-forest, core-habitat stretching from Jerusalem Road to Sohier Street, and from Little Harbor to Forest Avenue.

You'll find tall pines, squirrely oaks, and holly trees; diverse flora including lady slippers, fiddleheads, and mayflowers; vernal pools; wetlands drained by streams that discharge into Little Harbor; and irregular steeply-sloping outcrops with elevations ranging from 63 -119 feet hinting at the area's geological history.

The forests support a wide variety of wildlife such as coyote, fox, deer, and nineteen species of birds including nine migrant species. The watersheds provide habitats for amphibians and invertebrates. Towering trees and glacial rock formations provide homes for many creatures and awe-inspiring scenic beauty for human visitors.

The Wheelwright Park area, which includes the Sanctuary, is listed in The Historical Index Survey of Architectural and Historical Assets of the Commonwealth of Massachusetts as having an ice skating pond, fireplaces, picnic sites, and over 4,000 feet of enhanced gravel paths built by President Franklin Roosevelt's Works Progress Administration (WPA) in 1935.

The undeveloped lands also contribute to the public interest by helping to maintain high water quality for Cohasset residents since much of the acreage is located in the Sohier Street Well Field Zone of Contribution.

Miles of hiking trails and walking paths crisscross the land. Hiking, bird watching, photography, picnicking, dog walking, skating, horseback riding, sightseeing, nature walks, nature study, and painting are encouraged activities open to all, regardless of residency.

FRIENDS of the BARNES WILDLIFE SANCTUARY & WHEELWRIGHT PARK

We are grateful for the Cohasset Conservation Preservation Commission's Leadership

ENJOY YOUR VISIT BUT PLEASE:

- Remain on the trails to prevent damage to plants and other natural resources.
- Do not remove plant material (dead or alive).
- Dogs must be on leashes in the parking area. Dogs must be well-behaved and under control at all times.
- Animal waste must be picked up and disposed of in a trash receptacle. Mutt Mitts are available at the Park entrance.
- Hunting, trapping, weapons, and paintball are prohibited.
- No motor vehicles.
- No campfires.

"Leave only footprints, take only memories." Chief Seattle (1786-1866)

Barnes Wildlife Sanctuary & Wheelwright Park

112 acres of deep-core woodland protected in perpetuity

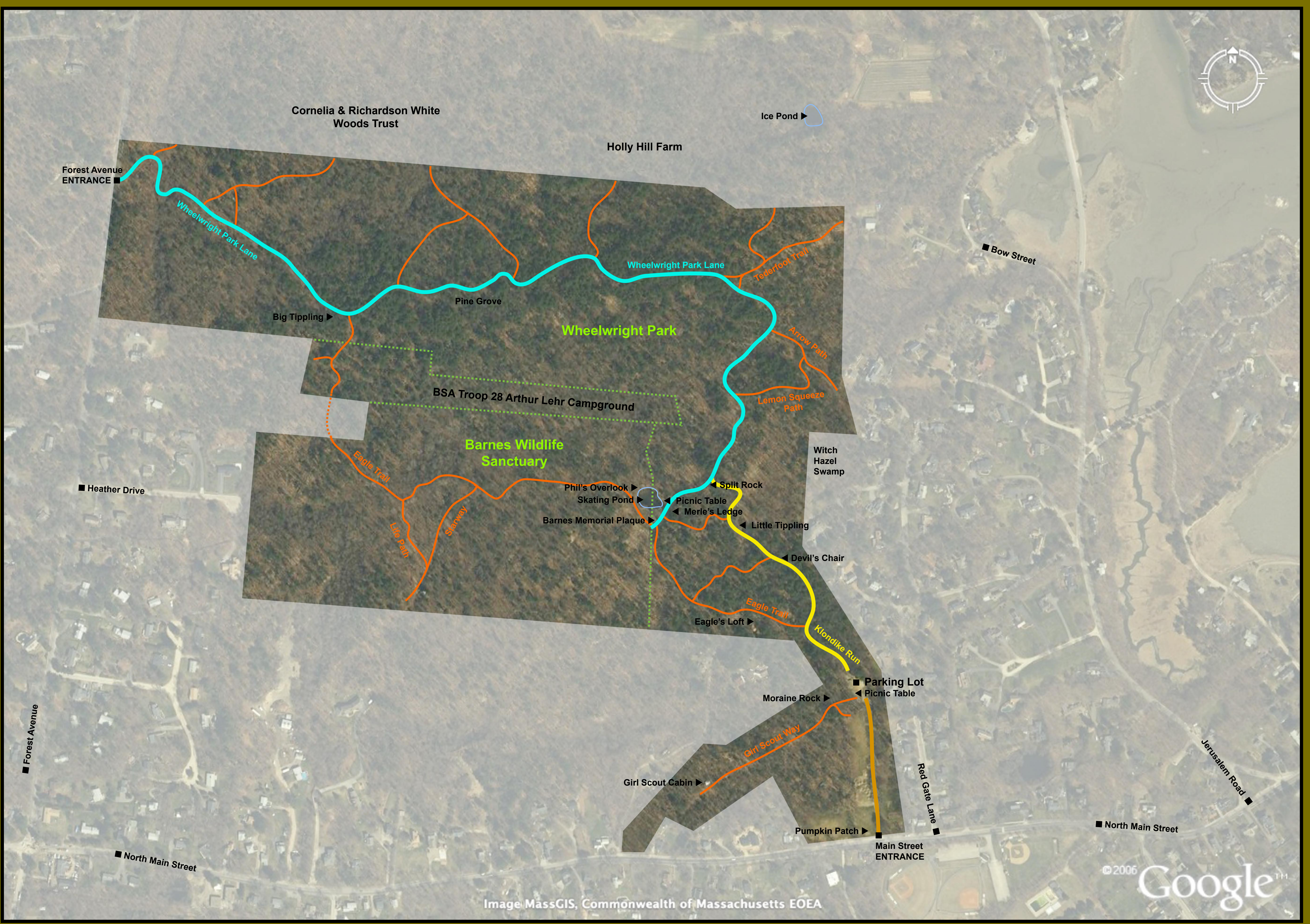


Image MassGIS, Commonwealth of Massachusetts EOE



Passive Recreation Only

No hunting, trapping, weapons, paintball, motor vehicles or camp fires



FRIENDS of the BARNES WILDLIFE SANCTUARY & WHEELWRIGHT PARK